



# THE NEHEMIAH PROJECT

Rebuilding the metro ward by ward

Inspired by the Biblical account of Nehemiah rebuilding the walls of Jerusalem



# Plan to rebuild city ward by ward

Why is it that thousands of South Africans are involved in community outreach, yet the output is just not commensurate with our input?

The problem lies in the fact that our efforts are disconnected, and as a result there is a lack of traction in responding to the challenges of inequality, poverty and unemployment.

Having identified the challenge church leaders in Nelson Mandela Bay have joined forces in a programme which, we believe, will unite the people of the metro in order to rebuild the walls/wards of our city.

It is inspired by the Biblical tale of the priest and businessman Nehemiah who, from around 445 BC, led the people of Jerusalem to rebuild sections of its walls, one section at a time.

The Nelson Mandela Bay Nehemiah approach is based on city-wide management grid in the form of the municipal ward structure, which includes the building blocks of:

- The municipal ward councillor and the members of the ward committee
- Existing civic organisations
- The churches and schools located in the specific ward
- Health clinics and hospitals
- Key players in the Safety and Security Sector i.e. SAPS, Neighbourhood Watch and Peace Monitors.

We will rebuild the social and economic walls of the wards one at a time by helping and empowering civil society, business and the local political leadership to work together to provide jobs and hope for our all our citizens through sustainable economic development at micro and macro levels.

Historical segregation has left many wards under-resourced. This is where partnerships with reputable NGOs, church groups and businesses are needed to identify and address the most critical social issues – one ward at a time.

# The Nehemiah Vision

***Nehemiah 2:17:*** “Then I said to them, “You see the trouble we are in: Jerusalem lies in ruins, and its gates have been burned with fire. Come, let us rebuild the wall of Jerusalem, and we will no longer be in disgrace.” (NIV).

## The Nehemiah vision and Nelson Mandela Bay

The vision is a metro where residents are united in a desire to rebuild the “walls” of our city.

- Our Nehemiah Vision is based on the mandate given to a **businessman**, Nehemiah, to rebuild the walls of Jerusalem.
- A city with broken walls was the sign of a defeated people.
- While Nelson Mandela Bay may not have physical walls to protect its citizens from economic and social hardship, our social and spiritual bulwarks are in dire need of rebuilding in order to tackle the three interlinked evils of unemployment, poverty and inequality.
- If these burning challenges are not dealt with they will cause the downfall of our society, despite the inherent natural and human wealth of the metro and South Africa as a whole.
- Our strategy is to rebuild the social and economic walls of the wards one at a time by encouraging and empowering civil society to work together for the well-being of all our citizens through sustainable economic development at micro and macro levels.

## Managing the process

In a city where our past history has resulted in geographical segregation our citizens should be encouraged to form **partnerships** with reputable NGOs, church groups and businesses to identify and address the most critical social issues – one ward at a time.

We should be a metro whose citizens share the same commitment to respect for others, trust, responsibility, fairness, caring for others and good citizenship.

### **City-wide management grid**

The Nehemiah approach is based on placing a management grid over the entire city.

The grid is the statutory **Municipal Ward structures**, with the building blocks being:

- The Municipal Ward Councillor and the members of the Ward Committee
- The Churches and Schools located in the specific ward
- Health clinics and hospitals
- Key players in the Safety and Security Sector i.e. SAPS, Neighbourhood Watch and Peace Monitors.

# Management tools

Essential **management tools** for the successful execution of the initiative include:

- Current ward maps showing assets that can be used, such as halls and empty buildings
- Ward integrated development plans (IDP) in the context of the metro's IDP
- Ward socio-economic profiles in order to identify the most pressing needs

In order to focus on the “how” we have developed a Municipal Cluster Nehemiah Project Scoreboard.

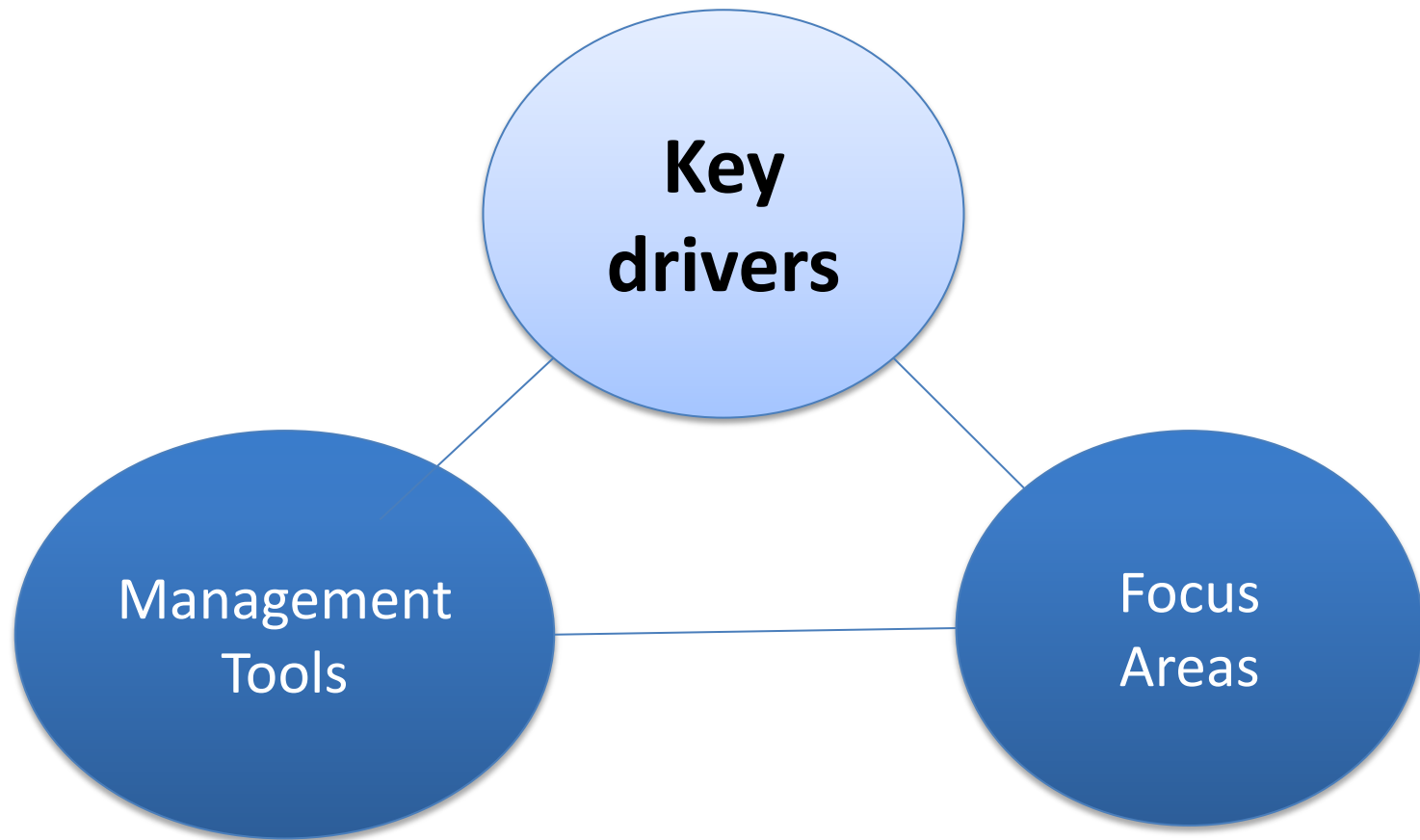
- A Nehemiah volunteer from the church should be identified to assist the Ward Councillor and her or his Religious Desk Leader (RLD) to promote the Nehemiah initiative in his/her Ward.

The approach is to address the evils of inequality, poverty and unemployment at a manageable micro level.

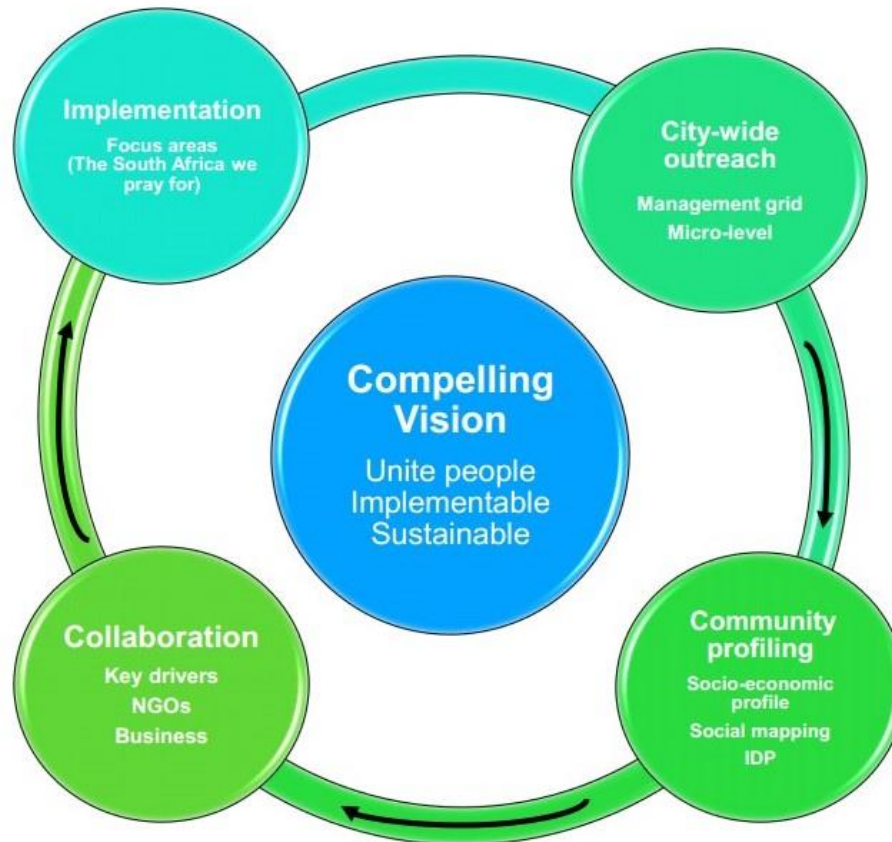
Practical projects would be in the fields of education, health and local job creation.

- Potential partners would include: Siya Sebenza, ABCD and Farming God's Way.
- Other focus areas set out in the “**The SA we pray for**” of healing and reconciliation, restoration of the family, economic transformation and anchoring democracy are being dealt with by the NM Bay Church Leadership Network.

## In a nutshell



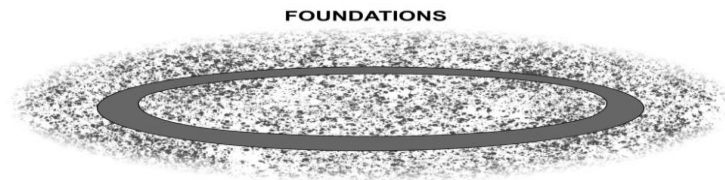
# Nehemiah City Vision



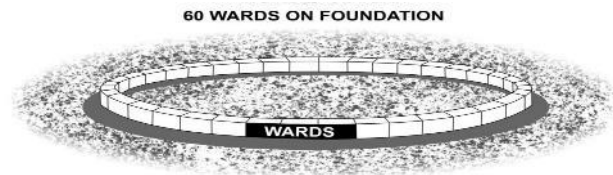


# Nelson Mandela Bay: Nehemiah Vision

In August 2012, Bishop Lunga ka Siboto chose Nehemiah 2:17 for the theme of his address at a city meeting in the Feathermarket Hall. A month later, a vision of how to implement the Nehemiah vision in NM Bay was shared at the Bishops' prayer meeting. This vision was confirmed by the Church Leaders at the next Bishop's monthly prayer meeting in November 2012 with a scripture from Habakkuk 2: 2-3. The vision is in four parts.



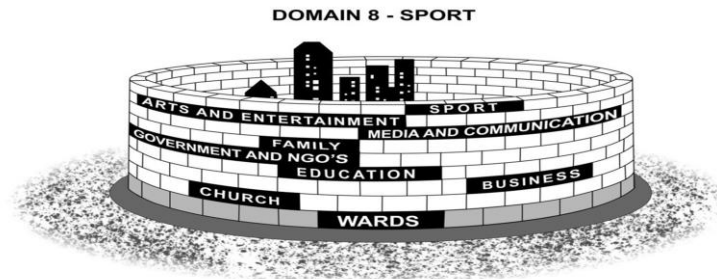
1. In the vision, we see a big circle forming a foundation surrounding NM Bay. Rather than being made up of the normal cement and stone mix, this foundation is made of a liquid substance with particles floating in it. When it hardens, this substance becomes far stronger than ordinary building materials. If we were to look closer, we would see that this substance is “Church Unity”. In the same way that the strengths of the foundations is the key to stability and strength of a building, so too will the strength of the unity of our churches be the key to the rebuilding our city. (Psalm 133; Nehemiah 4: 19-20).



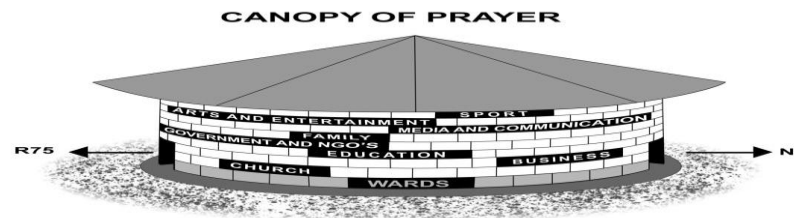


2. On this solid foundation a first layer of 60 large bricks is laid, "end to end" forming a circle, with each brick as a section. These sections represent the 60 municipal wards of NM Bay. Just as Nehemiah divided the wall of Jerusalem into sections and allocated each section to a specific group of people, we need to motivate and mobilize the people in each ward to accept responsibility for the rebuilding of their section of our metro. (Nehemiah 3)

#### 8 DOMAINS



3. The next eight layers of bricks are the eight domains: church, business, education, government, family, media & communication, arts & entertainment and sport. Just as the foundations support the brickwork above, so we call upon the people in each ward to work together in the domains to rebuild their section of the wall. Our strength will be the cement to hold these bricks together.



4. The walled city is covered by a canopy of prayer. To build this canopy over the metro we need to find a prayer coordinator for each ward. These coordinators will establish prayer groups to saturate their wards in united prayer and encourage the establishment of further groups covering all domains in their wards.(Nehemiah 4:17).




## Key Drivers / Team

### **KEY DRIVERS**

1. Ward Councillor
2. Churches
3. Schools
4. Health Clinics/ Hospitals
5. Safety and Security i.e. SAPS

### **TEAM**

1. Ward Councillor
  2. Municipal RDL (60 wards)
  3. Nehemiah Volunteer
  4. Ward Prayer Coordinator
- 

# Focus areas

## **Healing and Reconciliation**

- Triangular Community Dialogue (What's your story)
- Multilingual worship and prayer

## **Restoration of the family**

- Husband and Father
- Prison ministries

## **Inequality :Education:**

- Adopt a school
- Focus on junior schools and early childhood development
- Run homework, reading, maths and science clubs
- Support staff, parents and learners
- Character Transformation
- Provide sanitary towels



# Focus areas

## **Inequality: Health:**

- Adopt a clinic or hospital
- Support management, medical staff and patients
- Support hunger initiatives


## **Unemployment and Poverty**

- Work for a living
- ABCD
- Farming God's Way

## **Economic Transformation**

- Automotive, manufacturing, ICT, agriculture, tourism

## **Anchoring Democracy**

- Corruption and maladministration
  - Unashamedly Ethical
  - Media liaison team
- 

# The Nehemiah project (Questionnaire)



- We are embarking on an enormous task of collecting data in 15 focus areas from church ministries and NGOs in the 60 wards of our city.
- In partnership with a town planning company we will create an interactive digital map of what is happening in the city
- Using GPS coordinates and 15 different indicators we will plot the located of all the activities in each municipal ward.
- A simple enquiry facility will make the data available to the public to access basic contact details about activities in the city.
- It will also be possible to access information of all the other participants focusing on the same activity i.e. farming God's ways or early child development
- By making this information available to the public we encourage collaboration and avoid duplication of human and financial resources. We are already witnessing different churches and NGOs working together e.g. feeding schemes.

# The Nehemiah Project (Questionnaire)

**Name of Church/NGO/Organization:** .....

**Name of Contact Person:** .....

**Contact Number:** .....

**Email Address:** .....

Skills Training/Job Creation		Women		Environment	
Youth		Men		Health	
Children		Sport		Safety & Security	
Disability		Arts and Culture		Multi-Purpose Sites	
Food Security		Elderly		Other	



## Nelson Mandela Bay ward map







**Invitation to fix our City**

**JUST1HR**

